

**2018 Model Year Standard Specification**



**Principal Dimensions**

**Length overall (inc. pulpit):**

55'6" (16.92m)

**Length overall (exc. pulpit):**

53'6" (16.32m)

**Beam (inc. gunwale):**

14'10" (4.52m)

**Number of berths:**

4 - 6

**Draught:**

3'11" (1.20m) unloaded

**Height above waterline**

**(inc. arch & nav. light mast):**

15'1" (4.60m)

**Transport height:**

15'11" (4.87m)

**Dry weight (approx.):**

19.19 imp. tons / 21.49 US tons  
(19,500kg)

**Fuel capacity:**

530 gallons / 637 US gallons  
(2,412 litres)

**Water capacity (inc. calorifier):**

120 gallons / 145 US gallons  
(550 litres)

**Engines  
& Performance**

**Twin Volvo Penta D11-675 shaft  
drive, diesel (675mhp each):**

30 knots (estimated maximum)

**Type approval:**

B

**Twin Volvo Penta D11-725 shaft  
drive, diesel (725mhp each):**

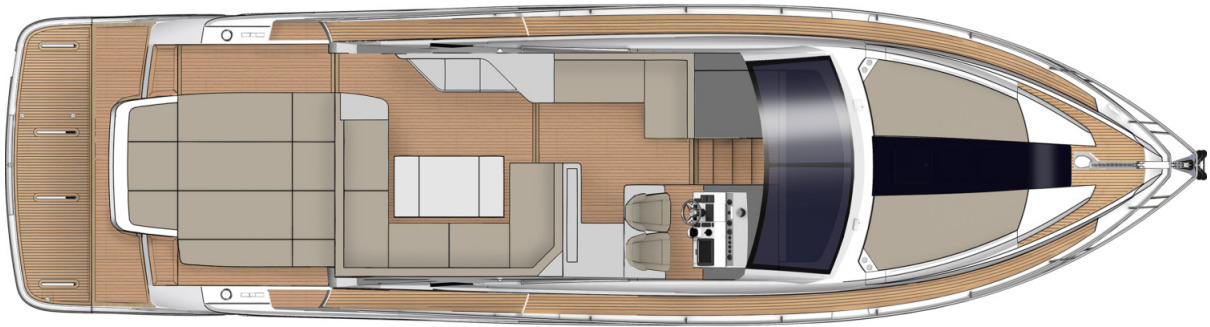
32 knots

**Max. persons capacity:**

16

Deck Plans

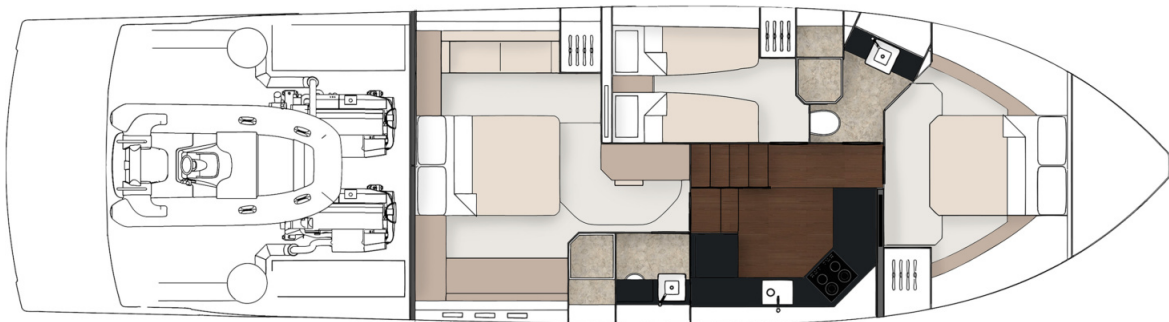
Main Deck



Lower Deck 2 Cabin



Lower Deck 3 Cabin



### Deck

Anchor chain locker	Recessed self-draining area on foredeck for coach-roof cushions
Anchor winch (electric)	Remote control searchlight
Anchor winch controls	Riding light
Bathing platform ladder	Self-stowing Delta® anchor (25kg)
Calibrated anchor chain (50m / 27.3 fathoms)	Stainless steel aft fairleads
Ensign & staff	Stainless steel bow fairleads
Fender set	Stainless steel bow, cockpit, stern & twin spring cleats
Foredeck drinks holders	Stainless steel gunwale with rubber inserts
Foredeck glazing	Stainless steel pulpit
Foredeck stowage lockers	Teak laid bathing platform
Fuel fillers	Twin horns
Full set of IMCO navigation lights	Water filler
Garage access	Windscreen washers
Handrail	Windscreen wipers
Hot & cold water transom shower	
Moulded non-slip deck surface	

### Helm Position

12V socket	Garmin GMI 20 digital multi-function instrument system with colour display
Adjustable/tilt steering wheel	Garmin VHF 300i marine radio
Bilge pump switches with integral operating warning lights & audible alarms	High speed magnetic compass
Black mesh windscreen covers	Opening window
Bow thruster controls	Powered steering
Controls for engine bay fire extinguisher system	Red night-light illumination to helm
Drinks holders	Remote anchor winch controls
Electronic single-lever throttle & gear controls for port & starboard engines	Rudder position indicator
Fuel gauges	Searchlight controls
Full engine instrumentation inc; tachometers, temperature gauges, audible alarms & engine hour meters	Settee opposite helm with table
Garmin GHP 20 autopilot system	Switches for navigation & riding lights, windscreen wipers & engine bay extractor fans
	Trim tab controls
	Twin helm seats

## Electrical Systems

230 - 240V 50Hz

All 240V, 24V & 12V circuits (where applicable) protected by circuit breakers with main electrical load control panel

Onan® 9.5kW generator

Heavy duty circuit breakers

Isolating switches to all batteries

### 12 Volt

Voltage dropper from domestic batteries

### 24 Volt

Batteries - 2 x heavy duty batteries exclusively for port engine starting

Batteries - 2 x heavy duty batteries exclusively for starboard engine starting

Batteries - 4 x heavy duty batteries wired in parallel supplying domestic services & port engine starting

Circuit breaker for anchor winch

Emergency battery coupling system permits each engine to start from opposite battery bank

Regulated battery charger

### 240 Volt

Polarity check & earth leakage protection system

Power points throughout fed from shore power or generator

Regulated 75amp charger for domestic batteries

Shore power supply

Spare circuit breakers for optional equipment

## Cockpit

12V heavy duty weatherproof socket

Access to side deck

Bathing platform lights

Boat hook

Deck level lighting

Drinks holders

Electric hardtop with pneumatic seal & overhead glazing

Engine bay access hatch with stainless steel gas struts

Fender stowage

Life raft stowage

Manual bilge pumps

Mooring warps

Mooring warp stowage

Sunpad (>2.8m wide) over garage

Teak laid floor throughout self-draining cockpit

Teak table with drinks holder

Transom gate

'U' shaped cockpit seating

Wet bar unit with refrigerator & sink

White vinyl cover

## Interior Décor

Choice of interior finishes from the Amalfi, Capri, Hamptons or St Tropez interior styling ranges selected by the Fairline Interior Design Studio

### Hullform & Construction

Antifouling protection to hull  
Bow thruster  
Deep 'V' forward 12.5° deadrise aft  
Design, layout & detailing by the Fairline Design Team.  
Feature windows with opening portholes  
Full length moulded spray deflectors  
Hull/deck joint bolted & bonded

Integrally moulded engine bearers  
Isophthalic gel coat backed by isophthalic resin-rich powder-bound glass mat  
Resin infused cored hull & liner with hand-laid deck & components  
Polyurethane foam cores throughout deck for strength & thermal insulation

### Saloon

FAIRLINE EDITION durable tumblers (set of 6)  
Folding table  
Overhead lighting

Random oak flooring  
Sofa with stowage  
TV with Fusion AV750 DVD/Radio & wireless connectivity

### Galley

Avonite work surface  
Chopping board to sink infill  
Crockery stowage  
Extractor fan  
FAIRLINE EDITION melamine dinner service (24-piece, 6 place settings)  
Fire extinguisher  
First aid kit

Full height fridge/freezer  
Induction hob  
Integrated waste bin  
Microwave combi oven  
Overhead lighting  
Random oak floor  
Sink with hot & cold mixer tap  
Stowage cupboards & drawers

### Lobby

Access to electrical control panel  
Access to master cabin, guest cabin/s, galley & day head  
Handrail

Lighting to stair risers  
Space for (optional) domestic appliance

## Accommodation

### Master Cabin

Aluminium venetian blinds  
 Double bed with storage drawers  
 Feature windows with opening portholes  
 Mirror

Overhead feature lighting  
 Reading lights  
 Sofa  
 Vanity unit with stool  
 Wardrobe

### Master Cabin En Suite

Aluminium venetian blinds  
 Avonite vanity unit locker & basin with hot & cold pressurised water  
 Electric silent-flush freshwater toilet  
 Extractor fan  
 Full set of bathroom fittings  
 Full size shower with seat & hinged door

Large hull window with single opening port hole  
 Mirror  
 Mirrored lockers  
 Overhead lighting  
 Random oak floor  
 Shower tray automatic pump-out system

### Forward Guest Cabin

Aluminium venetian blinds  
 Bedside table  
 Double bed with storage drawers  
 Escape hatch to foredeck  
 Feature windows with single opening porthole

Overhead glazing with blind  
 Overhead lighting  
 Reading lights  
 Wardrobe with mirrored doors

### Forward Guest Cabin En Suite / Day Head

Aluminium venetian blinds  
 Day access  
 Electric silent-flush freshwater toilet  
 Extractor fan  
 Full set of bathroom fittings  
 Full standing height shower with hinged door

Mirror  
 Mirrored lockers  
 Overhead lighting  
 Random oak floor  
 Shower tray automatic pump-out system  
 Vanity unit locker & basin with hot & cold pressurised water

### Port side Guest Cabin

Aluminium venetian blinds  
 Bedside table  
 Feature windows with single opening porthole  
 Full length berths x 2

Mirror  
 Overhead lighting  
 Reading lights  
 Wardrobe

## Engines & Sterngear

Automatic bilge pumps for forward bilge, engine bay & rudder bay with manual 'on' override  
Automatic engine bay fire extinguisher system  
Dripless shaft seals  
Electric engine bay fans  
Electro-hydraulic trim tabs with cathodic protection  
Engine air intakes  
Engine bay lights

Engine room soundproofing  
Exhaust overheat warning system  
High capacity emergency manual bilge pump system with dedicated valves  
Manganese bronze 'P' brackets  
Manganese bronze propellers contra-rotating  
Sea cocks on all inlets/outlets below waterline  
Stainless steel alloy shafts

## Fuel System

Changeover valve system enabling each engine to draw fuel from/return fuel to, either tank  
Emergency fuel shut-off valves accessible via cable-operated remote control

High capacity water separators & fuel filters  
Individual fillers & vents to port & starboard  
Twin fuel tanks

## Freshwater System

Automatic, pressurised supply  
Calorifier hot water system

Water tank

## Waste Water System

Holding tank (170 litres) with electric macerator pump-out

## USA Specifications

In addition to or in lieu of those listed above

Voltage - 2 x 110V (220V) 60Hz

Whilst every effort is made to keep all sales literature up to date, it should not be regarded as an infallible statement of current specifications & does not constitute an offer for the sale of any particular boat. We continually seek to improve the specification & design of our boats, so alterations & upgrades to specifications take place continually.

Appointed dealers are not agents of Fairline Yachts Ltd & are not authorised to commit Fairline Yachts Ltd by any express or implied undertaking or representation.

Performance Figures: Power quoted in our literature for diesel inboard engines is crankshaft output.  
Performance Estimates: Performance estimates are given in good faith, but are in no way guaranteed for any particular model. Dirt on the bottom of the boat, damage to the propellers, engine tuning, external water & air temperatures & the weight of crew, fuel & water carried can all adversely affect performance. For those & other reasons we can give no performance guarantees