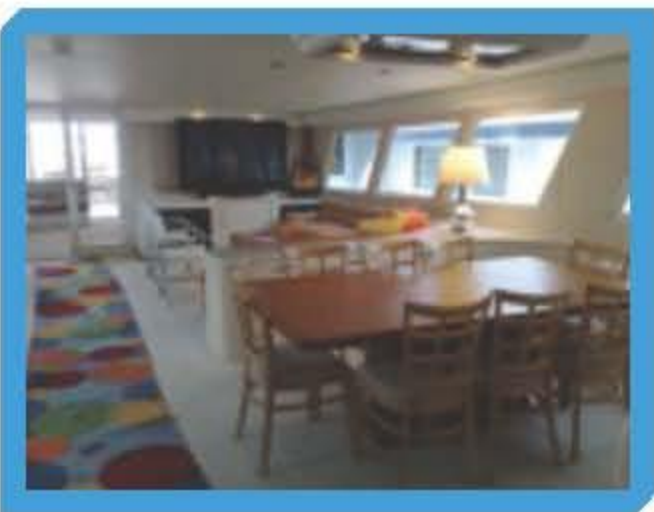


BOATING WORLD

32 M POOLE CHAFFEE LONG RANGE YACHT



SPECIFICATION

LENGTH: 32 M
BEAM: 7,5 M
DRAFT: 1.8 M

TANKAGE:
FUEL: 22.710 LITERS
WATER: 6.813 LITERS

CONSTRUCTION: ALL ALLOY
BUILT: 1976
EXTENDED 1999

SPEED: 10,5 KNOTS CRUISING / 13 TOP

MAIN ENGINES: 2 X DETROIT DIESEL
(NEW 2000)
HP: 2 X 650
LAST REVISION: 2004

ACCOMMODATION:

**OWNERS FULL BEAM STATEROOM
WITH HIS / HERS BATHROOMS AND
JACUZZI, SEPARATE TOILET AND
DRESSING ROOM**

ELECTRICAL SYSTEMS: 110 / 220 V AC
24 / 12 V DC
(BOTH EUROPEAN AND USA EL. SYSTEM)

**ADDITIONAL 1 X DOUBLE AND 2 X
TWIN GUEST CABINS**

GENERATORS: NORTHERN LIGHTS 40 KWA
NORTHERN LIGHTS 55 KWA

THREE CABINS FOR 6 CREW

NAVIGATION INSTRUMENTS:

- JEPPESEN AIS RECEIVER
- SIMRAD AP50 AUTOPILOT
- FURUNO 72 NM RADAR
- SEA 235 SSB TRANCEIVER
- RAYMARINE PLOTTER INTERFACED WITH AIS
AND GEONAV GPS
- 2 HORIZON DIG VHF'S
- NERA MINI SAT PHONE
- NORTHSTAR GPS
-
- ACR EPIRB
- PANASONIC PHONE SYSTEM

CRANES: 2 X CRANES FOR LAUNCHING
WATERCRAFT

MOORING: 2 X 200KG ANCHORS WITH APPROX
150 M CHAIN
IDEAL ELECTRIC WINDLASS
ELECTRIC CAPSTAN AFT

TENDER: 5 M NAUTICA W/ 90 HP YAMAHA
3 SEAT YAMAHA JET SKI

SPECIAL FEATURES:

HER 7,5 METER BEAM PROVIDES
LARGE AND SPACIOUS LIVING
AREAS AND VERY STABLE RIDE.

VERY LARGE TOP DECK AREA WITH
FLY BRIDGE DRIVING STATION,
WET BAR, BARBECUE, DINING AND
SUN LOUNGE AREA.

EXCELLENT SEA KEEPING AND
LONG RANGE ENABLED HER TO
CROSS ATLANTIC OCEAN WEST TO
EAST IN 2008.

HYDRAULIC PASSARELLE
INSTALLED 2010

GALLEY ON MAIN DECK WITH
PROFESSIONAL QUALITY HOB/OWEN
DISHWASHER, LARGE FRIDGE AND
FREEZER

All details given in good faith and not guaranteed to be accurate and are not to be used as a basis for any
contract.
Price and availability subject to change without notice.